



Chatham County Parks and Recreation Strategic Plan December 2015

Strategic Plan Committee

Robert Drewry, Director, Public Works and Park Services

Stephen Proper, Parks and Recreation Services Manager

Misty Selph, Facilities Manager

Lorenzo Bryant, Recreation Manager

Mark Burgess, Park Maintenance Superintendent

Vicki Blumberg, Recreation Superintendent

Table of Contents

Introduction	3
Purpose of the plan	3
Background	4
Inventory	6
Definition and Goals	8
Scoring of Matrix	11
Plan of Action	13
Community Parks	14
Sports Complex	17
Neighborhood Parks	21
Boat Ramps	24
Trails	27
Green Space	28
Community Centers	29
Future Growth Needs	30
Conclusion	32
Appendix	33

Introduction

Parks and Recreation are essential elements of Chatham County's quality of life and their importance will only increase as the County becomes more dense and more populous. The 2015 Strategic Plan is to set the direction for the Department by identifying the standards, policies and resources required to achieve the County's goals for parks and recreation.

Vision Statement

To create and connect communities through people, parks and programs

Mission Statement

The Mission of Chatham County Parks Services is to provide exceptional parks, facilities, programs and services to improve the quality of life for the citizens of Chatham County.

Purpose of the plan

The purpose of the plan is to help create a collective vision from County staff that evaluates existing park facilities and to provide staff guidance in future decisions in regards to the type of parks and recreation facilities provided. This document provides Chatham County with an action plan that is a living, dynamic document, constantly growing and changing to reflect the needs of the County. The strategic plan will identify areas for development and improvement in the quality of parks opportunities for the residents.



Demographics

Chatham County has grown since the last census (2013) and currently has a population of 283,379. The increase in population has grown by 6.9% since 2013. Chatham County owns and operates park facilities that serve the entire population of Chatham County. It should be noted that some County facilities are frequented by citizens outside the county such as boat ramps, the Aquatic center, ballfields and fishing piers. Pavilion rentals have come from outside the state, particularly at the Walter Parker Pier and Pavilion Tybee Island.

In addition, each municipality provides many of the same type of park facilities as Chatham County that serve a county-wide population.

Background

During the 1960's when the Parks and Recreation Department was established, the philosophy of the County was to create a neighborhood park in all unincorporated and municipality areas for the enjoyment of the residents. Over the next several decades, 30 neighborhood parks were created. During that time the focus of the department was on outdoor activities, special events and programs for children and adults. The special programs included a bus program to neighborhood parks with lunch included, educational work programs as well as community service programs. Due to budget cuts in the 1990's, many neighborhood parks were turned over to the municipality in which they were located. Currently the County has a long term lease agreement for several parks and boat ramps. If not shown as a lease, a facility listed below is otherwise owned by Chatham County.

Name of Park	Lease Holder
Salt Creek	Progressive Center
L. Scott Stell	Federal Government
Pin Point	Private Owner
Rio Vista	Private Owner
Montgomery Park	Private Owner
Jaycee Park	Lazaretto Creek Club and others

Whitemarsh Island Neighborhood Park	Private Owner
Frank Murray Community Center	Land lease with Board of Education
McQueens Island Trail	Ft. Pulaski and Chatham County
Lazaretto Boat Ramp	State of Georgia
Burroughs Park	Private Owner
Ogeechee Farms	Private Owner
Sandfly	Private Owner
Ambuc	Land owned by City of Savannah

Over the decades since the 60's, the County has developed a variety of parks, park facilities and park amenities, primarily from CIP through the general fund. The County Commission showed tremendous foresight by the development of Lake Mayer in the 1970's, McQueens Rails to Trails in the 80's and Tom Tripplett Park in the 90's. The Special Purpose Local Option Sales Tax (SPLOST) has funded the creation of many recreation facilities in the last 20 years, some as an Olympic Legacy celebrating the 1996 Summer Olympics in Georgia. Those facilities include the Aquatic Center, the Anderson/Cohen Weightlifting Center and the Henderson Golf Course, Walter Parker Pier and Pavilion, Jennifer Ross Soccer Complex, Abolt – O'Brien Soccer Complex.

Unfortunately, funding for maintenance of new facilities was not allowed with SPLOST capital funding. In 2005, the County Commission recognized a need to designate funding from the General Fund to improve parks and recreation facilities. Staff has referred this allotment as RAP (Recreation Action Plan). RAP from 2005-2009 resulted in capital repair funding, additional equipment resources and additional staff resources.

Inventory

Type of Facilities	Location	Type of Facility	District
Al Bungard Conservation Area	Un- incorporated	Nature Trail	6
Ambuc Park	Savannah	Sports Complex	1
Anderson Cohen Weightlifting	Savannah		1
Aquatic Center	Savannah		1
Bell's Landing Boat Ramp	Savannah	Boat Ramp	6
Blue Sky	Un- incorporated	Nature Trail	6
Burroughs Neighborhood Park	Un- incorporated	Neighborhood Park	6
Charles C. Brooks Complex	Un- incorporated	Sports Complex	4
Abolt –O'Brien Soccer Field	Un- incorporated	Sports Complex	4
Frank Downing Fishing	Un- incorporated	Fishing Pier	1
Frank G. Murray Community	Un- incorporated	Community Center	4
Frank Spencer Boat Ramp	Un- incorporated	Boat Ramp	3
Gray Subdivision Neighborhood	Un- incorporated	Neighborhood Park	4

Henderson Golf Course	Un- incorporated	Golf Course	5
Isle of Hope Park	Un- incorporated	Neighborhood Park	1
J. C. Cannon Sports Park	Un- incorporated	Sports Complex	4
Jennifer Ross Soccer Complex	Savannah	Sports Complex	1
Jim Golden Sports Complex	Un- incorporated	Sports Complex	5
King's Ferry Boat Ramp	Un- incorporated	Boat Ramp	6
L. Scott Stell Community Park	Un- incorporated	Community Park	5
Lake Mayer Community Park	Savannah	Community Park	1
Lamarville Neighborhood	Un-incorporated	Neighborhood Park	5
Lazaretto Creek Boat Ramp	Un- incorporated	Boat Ramp	4
McCorkle Bike Trail	Un- incorporated	Bike Trail	4
McQueens Island Trail	Un- incorporated	Nature Trail	4
Memorial Stadium	Savannah	Sports Complex	1
Montgomery Boat Ramp	Un- incorporated	Boat Ramp	1
Montgomery (Hodge Turner)	Un- incorporated	Neighborhood Park	1
Mother Mathilda Beasley Park	Savannah	Community Park	2
Ogeechee Farms	Un- incorporated	Neighborhood Park	6
Old Savannah Ogeechee Canal	Savannah	Nature Trail	Varies
Pin point Neighborhood	Un- incorporated	Neighborhood Park	1
Rio Vista Neighborhood	Un- incorporated	Neighborhood Park	1
Rodney J. Hall Boat Ramp	Un- incorporated	Boat Ramp	1
Runaway Point Park	Un- incorporated	Community Park	3
Salt Creek Boat Ramp	Un- incorporated	Boat Ramp	8
Sandfly Park	Un- incorporated	Neighborhood Park	1
Skating/Hockey Rink	Savannah	Sports Complex	1
Thunderbolt Boat Ramp	Thunderbolt	Boat Ramp	3
Tom Triplett Community Park	Pooler	Community Park	7
Turners Creek Boat Ramp	Un- incorporated	Boat Ramp	4
Walter Parker Pier and Pavilion	Un- incorporated	Fishing Pier and Pavilion	4
West Lake Park	Un- incorporated	Neighborhood Park	5
Whitemarsh Preserves	Un- incorporated	Nature Trail	4
Wilmington Island Community Park	Un- incorporated	Community Park	4

Funding Source

The Chatham County Parks Services Department is funded by the Chatham County Board of Commissioners in the General Maintenance and Operation Fund. The budget is adopted on a fiscal calendar from July 1 – June 30 of each year. Additional sources of funding and/or improvements are through CIP and SPLOST.

Definitions and Goals for Park and Recreation Facilities

In order for staff to evaluate park facilities, a matrix and scale needed to be identified. The following is the definition of each category that staff will use as a guide to determine their score. Staff will then evaluate each park facility and identify a score for each of the 6 categories. Once staff has completed scoring the facilities an average score per park will be compiled. Those scores will be used to determine plans of action per park.

The scale of measurement for each of the following shall be:

1 – Low

5 - High

Usage - Park Facilities are designed for a specific use. In order to measure the usage of each facility, staff will base their ratings on the following: staff observations, facility rentals and program participation. The higher the score means that in staff's opinion, the public utilizes the facility more than another park within the same Category.

Goal - It is staff's goal to see each facility well used by the general Public for the purpose intended.

Condition - Staff strives for the condition of each park and park amenity to be in excellent condition. Unfortunately, because of age and wear, the actual condition of the park facilities fall below staff's expectations. The minimum standard for each park should consider the following: parking, building, grounds and equipment. To determine the condition, staff made visual observations, review CIP needs and consider customer complaints. Staff will rate the condition of the park on the following scale:

(1) Unusable, (2) Poor, (3) Fair, (4) Good, (5) Excellent

Goal – Staff's goal is for that the condition of each park and park amenity to be in excellent condition.

Accessibility –The Parks and Recreation facilities should be accessible to all who wish to utilize a County park including those persons with disabilities and special needs. Accessibility will also include whether or not the park or facility is being used for its intended purpose. Staff will assess the entrance, egress, times of day for usage, and parking to determine accurate accessibility.

Goal – Each facility must be accessible by the public for its intended purpose.

Community Support – There should be a relationship between the County and community it serves. The ideal relationship includes consistent communication with staff, public assistance input, and special events **for example**. Neighborhood parks should have representation with neighborhood associations. Additional buy in from private clubs and sporting associations should be formed to support current park and recreation facilities.

Goal – Ideally, each facility should have the full support and cooperation of the community it serves. Support can be in the form of labor, materials, rentals, and regular communication with staff.

Ownership – Each park should have a long term agreement or clear ownership.

?Goal – With a defined relationship, the county will determine improvements necessary to each park.

Maintenance – Staff time for maintenance at each park facility is documented. Based on the existing man hours calculated through the work order system, maintenance hours can be determined. The higher the score for Maintenance means that more staff time has been dedicated to the facility relative to another facility within the same type of facility.

Goal – Staff will have a plan of action to create a maintenance plan which will ultimately make this facility either maintenance free or require minimal maintenance.

CHATHAM COUNTY PARK FACILITIES

FACILITY	CATEGORY	ASSET	SCORE
Abolt O'Brien Soccer Field	Sports Facilities	General Grounds	4.5
Al Henderson Golf Course	Sports Facilities	18 hole golf course	3.2
Ambuc Park	Sports Facilities	General Grounds	4.0
Anderson Cohen Weightlifting Center	Sports Facilities	General Grounds	4.2
Aquatic Center	Sports Facilities	building	4.2
Bells Landing	Boat Ramps and Piers	General Grounds	4.2
Blue Sky Preserve	Green Space	General Grounds	3.1
Bungard Conservation Area	Green Space	General Grounds	3.7
Burroughs	Neighborhood Park	General Grounds	3.1
Canebrake	Neighborhood Park	General Grounds	2.0
Charles Brooks Sports Complex	Sports Facilities	General Grounds	4.3
Frank Downing	Boat Ramps and Piers	pier, fishing	3.7
Frank G. Murray Community Center	Community Center	Building	3.6
Frank O Williamson Lake	Green Space	General Grounds	2.9
Frank W. Spencer	Boat Ramps and Piers	General Grounds	3.2
Gray Subdivision	Neighborhood Park	General Grounds	3.7
Hodge Turner	Neighborhood Park	General Grounds	2.6
Isle of Hope	Neighborhood Park	General Grounds	2.8
Jaycee Cannon Field	Sports Facilities	General Grounds	2.7
Jennifer Ross Soccer Complex	Sports Facilities	General Grounds	4.4
Jim Golden Complex	Sports Facilities	General Grounds	4.3
Kings Ferry	Boat Ramps and Piers	General Grounds	4.1
L. Scott Stell Community Park	Community Park	General Grounds	3.2
Lake Mayer Community Park	Community Park	General Grounds	3.9
Lake Mayer Community Park	Community Center	Building	4.4
Lamarville	Neighborhood Park	General Grounds	3.7
Lazaretto Creek	Boat Ramps and Piers	General Grounds	3.5
McCorkle Trail	Trails	trail, paved	3.8
McQueens Island Trail	Trails	trail, limestone	3.9
Memorial Stadium	Sports Facilities	football field turf	4.6 *
Montgomery	Boat Ramp	General Grounds	2.4
Mother Mathilda Community Park	Community Park	General Grounds	4.5
Ogeechee Farms	Neighborhood Park	General Grounds	1.8

Pennyworth Island Perserve	Green Space	General Grounds	1.9
Pinpoint	Neighborhood Park	General Grounds	1.8
Rio Vista	Neighborhood Park	General Grounds	2.6
Rodney J. Hall	Boat Ramps and Piers	General Grounds	4.3
Runaway Point Park	Community Park	General Grounds	3.9
Salt Creek	Boat Ramps and Piers	General Grounds	3.4
Sandfly	Neighborhood Park	General Grounds	1.6
Savannah & Ogeechee Canal	Trails	trail	1.7
Thunderbolt	Boat Ramps and Piers	General Grounds	3.5
Tom Triplett Community Park	Community Park	General Grounds	4.1
Tom Triplett Community Park	Community Center	Building	4.2
Turners Creek	Boat Ramps and Piers	General Grounds	4.3
Walter Parker Pier	Boat Ramps and Piers	Pier and Pavailion	4.4
Westlake	Neighborhood Park	General Grounds	3.1
Whitemarsh Island Park	Neighborhood Park	playground	2.5
Whitemarsh Preserve	Green Space	General Grounds	4.1
Wilmington Island Park	Community Park	General Grounds	3.7

NOTE: The matrix score for the Memorial Stadium was high due to the high score of usage, accessibility, community support, maintenance. However, the condition of the stadium is low due to the recommendation to replace. However, that 1 low score does not out weigh the need and demand for a football stadium overall.

Plan of Action

Based on the recommendation of staff and the scoring of each park, there are plans of action that need to be completed. The parks are divided up by Category. Under each park is a description of the park and the recommendations by the committee. The plan of action should strive for a time frame of 1 – 5 years depending on funding. Recommendations are also being made by the committee for some park closures due to the low score that did not meet the definitions of the matrix. Justification is detailed under those recommendations.

Plan of Action for each park could include park improvements, development of master plans, new fields or other additions to park facilities.

Community Parks

Community Parks – Park that serves a broader community that accommodates a larger volume of people for a variety of intended purposes. At a minimum, Park amenities include: restroom, parking, playground, benches or picnic tables.

Lake Mayer Community Park – 3.9 Overall score

This facility offers community center, tennis courts, basketball courts, trail, lake, boat ramp, baseball/softball field, hockey rink, playground, handball, fishing pier, remote control track, education center, and pavilions for rental, volleyball, dog exercise area, and restroom.

Plan of Action

- Parking lot improvements and drainage
- Lighting improvements to tennis courts
- Renovate pavilions
- Complete final phases of master plan

L. Scott Stell Community Park – 3.2 Overall score

The facility offers baseball/softball fields, a trail, tennis courts, a basketball court, lake, boat ramp, fishing pier, playground equipment, archery targets, parking, and restrooms.

Plan of Action

- Improvements to parking and landscaping
- Drainage improvements
- Renovate existing office
- Complete final phases of master plan

- Add multi-purpose fields

Mother Matilda Community Park – 4.5 Overall Score

The facility offers pavilion with restrooms, a baseball/softball field, a trail, a dog park and a playground.

Plan of Action

- Landscaping improvements, Handicap accessibility
- Improvements to dog park
- Future Family History Center
- Grass Volleyball park
- Complete Final Phase of Master Plan

Runaway Point Park – 3.9 Overall Score

This facility offers restroom with concessions, baseball/softball, basketball, multipurpose field, trail, and a playground.

Plan of Action

- Improvements to parking including resurfacing
- Resurface basketball courts
- Improve pavilions
- Improvements to jogging trail

Tom Triplett Community Park – 4.1 Overall Score

This facility offers lighted tennis courts, a lighted trail, a lake, a disc golf course, a dog exercise area, bike trail

Plan of Action

- Resurface existing trail including expansion
- Expanding the parking lot and road
- Extend playground area
- Multi-purpose field
- Complete final phase of mater plan
- Add a restroom

Wilmington Island Park – 3.7

This facility offers pavilion, restrooms, playground, and nature trail.

Plan of Action

- Improve parking lot
- Improve bathrooms
- Rebuild pavilion
- Replace playground equipment

Sports Complex

Sports Complex – Multipurpose facility that is a stand alone use that accommodates the greater community including outside of Chatham County. This facility supports County recreational sports and programs.

Al Henderson Golf Course – 3.2 Overall Score

Al Henderson Golf Course is an 18 hole course that includes a driving range, concession area, pro shop and onsite golf pro.

Plan of Action

- Course redesign and renovation
- Revising of contract with management group
- Infrastructure improvements

Ambuc – 4.0 Overall Score

This facility has lighted baseball/softball fields, concession and restrooms.

Plan of Action

- Laser grading of fields and irrigation
- Updating bathrooms and concession area
- Improvements to parking

Anderson Cohen Weightlifting Center – 4.2 Overall Score

The Anderson Cohen Weightlifting Center is an Olympic Weightlifting Center that is also a gym that is open to the public. The Center is also home to Abilities Unlimited which is an exercise program for special needs adults.

Plan of Action

- Replace equipment
- Increase storage

Aquatic Center – 4.2 Overall Score

Indoor swimming pool with 2 pools offer a variety of services including water aerobics, swim lessons, swim team and lap swimming

Plan of Action

- Renovate bathrooms
- Repaint pool interior including pool bottom
- Improvements to parking
- Master plan for future development

Charles Brooks Sports Facilities – 4.3 Overall Score

This facility has lighted baseball/softball fields, a lighted soccer/football field, concessions, bathrooms, trail, and dog exercise area.

Plan of Action

- Expanding fields including adding multi-purpose field and baseball field
- Replace concessions and bathrooms
- Improvements to trail
- Construct maintenance building

Abolt O'Brien Soccer Field – 4.5 Overall Score

This facility is a lighted soccer field and bathrooms

Plan of Action

- Improvements to drainage
- Improvements to bathrooms
- Install fencing

JC Cannon Field – 2.7 Overall Score

This facility has lighted tennis courts, baseball/softball fields and basketball courts

Plan of Action

- Improvements to field including laser grading
- Improve existing parking lot
- Improve lighting on tennis courts
- Resurface basketball court with equipment upgrade

Memorial Stadium – 4.6 Overall Score

Football stadium with locker rooms, ticket booth, concessions

Plan of Action

- Renovate/replace facility

Jennifer Ross Soccer Complex – 4.4 Overall Score

Lighted soccer fields, concession, bleachers, bathrooms,

Plan of Action

- Expand 2 soccer fields
- Improvements to drainage
- Parking improvements
- Playground addition
- Resod existing fields
- Restroom by Field 3

Jim Golden Complex – 4.3

The facility has lighted baseball/softball fields, bathrooms and concessions.

Plan of Action

- New concession
- Re-grass fields and irrigation system expansion

Neighborhood Parks

Neighborhood Park – Park that is within walking distance within a neighborhood - The measurable scale shall be 10 minutes walking distance from a resident's home. At a minimum, the amenities shall include: playground, shelter, and/or a picnic table.

Burroughs – 3.1 Overall Score

This facility has a basketball court, a tennis court, a playground, and a picnic area.

Plan of Action

- Build new pavilion
- Develop parking
- Improvements to tennis court
- Review lease

Canebrake – 2.0 Overall Score

This facility is land only with picnic benches

Plan of Action

- Develop long term lease/agreement
- Playground equipment installed
- Parking
-

Gray Subdivision – 3.7 Overall Score

This facility has a playground, multipurpose field, picnic, basketball court

Plan of Action

- Improvements to multi purpose field
- Install seating
-

Isle of Hope – 2.8 Overall Score

This facility has a playground and basketball court.

Plan of Action

- New playground equipment
- Renovate basketball court and equipment
-

Lamarville – 3.7 Overall Score

This facility has a basketball court, picnic shelter and playground.

Plan of Action

- Replace playground equipment

Hodge Turner – 2.6 (Property owner is not Chatham County)

This facility has a basketball court, playground, picnic shelter and multi purpose field.

Plan of Action

- Improvements to multi purpose field
- Replace equipment to basketball court and playground
- Install landscaping
- Replace picnic shelter
-

Ogeechee Farms – 1.8 Overall Score

This facility has a playground, picnic, basket ball court

Plan of Action

- Staff recommends this facility not be retained. The low score is based on low usage, accessibility, intended purpose and condition.

Pin Point – 1.8 (Property owner is not Chatham County)

This facility has a playground, picnic, basketball court

Plan of Action

- Staff recommends this facility not be retained. The low score is based on low usage, accessibility, intended purpose and condition.

Rio Vista – 2.6 Overall Score

Playground, basketball/tennis court

Plan of Action

- Renegotiate lease
- Improvements to basketball and tennis
- Replace playground equipment

Sandfly – 1.6 Overall Score

Plan of Action

- Staff recommends not retaining this facility due to low usage, accessibility, condition and intended purpose.

Westlake – 3.1 Overall Score

Playground, picnic, basketball court

Plan of Action

- Playground improvements
- Basketball court improvements

Whitemarsh Park – 2.5 Overall Score

Playground, basketball court

Plan of Action

- Install signage
- Fencing
- Playground improvements and basketball court
- Negotiate lease

Boat Ramps and Piers

Boat Ramp – Separate, stand alone boat ramp or pier that allows access to public water ways.

Bell's Landing – 4.2 Overall score

Boat ramp and floating dock

Plan of Action

- No recommendations at this time. Recently renovated

Frank Downing – 3.7 Overall Score

Fishing Pier

Plan of Action

- Repairing walk way

Frank W Spencer – 3.2 Overall Score

Fishing Pier, Boat Ramp

Plan of Action

- Removing restrooms
- Rebuild boardwalk and boat ramp

King's Ferry – 4.1 Overall Score

Boat Ramp, fishing pier, playground, bathrooms, pavilion

Plan of Action

- No recommendations at this time, recently renovated.

Lazaretto Creek – 3.5 Overall Score

Fishing Pier, boat ramp

Plan of Action

- Install parking and pavement

Montgomery – 2.4 Overall Score

Boat ramp

Plan of action

- Install electric gate

Salt Creek – 3.4 Overall Score

Boat Ramp, fishing pier, playground, picnic shelter

Plan of action

- Well upgrades
- Improve parking
- New fishing pier and pavilion

Rodney J Hall – 4.3 Overall Score

Boat Ramp, fishing pier, beach front, bait shack, bathrooms

Plan of action

- Renovate bathrooms
- Improvements to shelter
- Add buoy line, signage and re-establish beach

Thunderbolt – 3.5 Overall Score

Boat ramp

Plan of Action

- Resurface parking area.

Turners Creek – 4.3 Overall Score

Boat ramp, bathrooms, floating dock

Plan of Action

- No recommendations at this time due to recent renovation.

Walter Parker Pier – 4.4 Overall Score

Fishing Pier, pavilion, bathrooms, concessions, and bait shop

Plan of Action

- Replace roof

Trails

Multipurpose Trails – Standalone, separate trails that are used for walking, riding, or bicycling

McCorkle Trail – 3.8 Overall Score

4.6 mile asphalt trail in residential area and business area.

Plan of Action

- Resurface area
-

McQueens Island Trail – 3.9 Overall Score

6 miles of limestone on Coastal water

Plan of Action

- Re-nourishment of trail
- Replacement of bridges
- Improvements to parking
-

Savannah & Ogeechee Canal – 1.7 Overall Score

Plan of Action

- Partnership through private committee

Green Space

Green Space Nature Preserve – Natural, passive, undisturbed land that protects the cultural history, natural flora, fauna, and wetlands.

Blue Sky Preserve – 3.1 Overall Score

Al Bungard Conservation Area – 3.7 Overall Score

Plan of Action

- Kayak and canoe water trail
- Community Support

Frank O Williamson Lake – 2.9 Overall Score

Plan of Action

- Multi purpose trail with access from Jennifer Ross Soccer Complex and Sallie Mood
- Picnic Tables
-

Pennyworth Island Preserve – 1.9 Overall Score

Whitemarsh Preserve – 4.1 Overall Score

Community Centers

Community Center – Climate controlled facility that is host to programs, meetings or available for rentals.

Tom Tripplett – 4.2 Overall Score

Conference room, bathrooms, programs

Lake Mayer Community Center – 4.4 Overall Score

Community center for rent, bathrooms, programs

Objective

- Install kitchen

Frank G. Murray Community Center – 3.6 Overall Score

Conference room, kitchen, restrooms, programs

Future Growth Needs of Parks and Recreation

Analyze gaps of recreation services within the community.

Execute replacement plan and life cycle plan.

Complete current study of current playground to determine compliance with ADA and improvements for citizens.

Develop satisfaction survey for public input of parks.

Develop brochures to include trails and parks.

Develop social media concepts for Park Facilities.

Based on conversations with staff, Commissioners, and recreation participants, the following future needs have been identified:

Football Complex – Chatham County Parks and Recreation is seeing a growth in the number of teams that are participating in the County league. Based on that growth and the limited playing area, staff believes that a future site needs to be identified to accommodate the growth.

Alternate Sites for Soccer – There are limited number of sites for soccer and the number of soccer clubs have grown. With the addition of other multi-purpose fields or soccer fields in other areas of the County, staff will be better able to accommodate the demand for field rental. Additionally the main existing soccer complex, Jennifer Ross Soccer Complex, needs to have down time in order for staff to keep up with the maintenance on the fields.

Multi-purpose gym – An increased demand for inside gym space is an additional need requested by recreation participants. Currently, there is no County owned gym. By providing a multi-purpose gym to the community we will be able to meet the demand, increase revenues through rental and increase the type of programs offered to the community.

Ingress/Egress Study of Sallie Mood Drive – In partnership with the City of Savannah and Chatham County Engineering, it has been determined there is a need for a study to address traffic safety to Recreation Fields.

Lacrosse Field - Location for addition of potential lacrosse field or multi purpose field to host local games and tournaments. This will meet the needs of the demand from both the local, regional and national level.

Conclusion

The Strategic Plan for Chatham County Park Services is a living document, one that will change over time. Staff supports this plan as the start of Strategic Planning for Chatham County Park Services. We encourage its adoption and future modification of action items and key success measures as conditions and financial situations change.

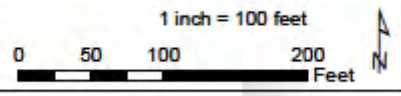
The plan with its recommendations and plans of action shall be reviewed on an annual basis. We recognize that we want to improve our parks and facilities for the betterment of our community and user groups.

We wish to thank the Board of Commissioners and the County Manager for giving us the opportunity to work on this plan and for their leadership and sincere desire to make our County Recreation Facilities the model for all recreation departments throughout the nation.



Public Works & Park Services
Parks & Recreation Department
7226 Varnedoe Drive
Savannah, Ga 31406

Chatham County Aquatic Center
5.88 Acres
7240 Sallie Mood Drive





Public Works & Park Services
Parks & Recreation Department
7226 Varnedoe Drive
Savannah, Ga 31406

Al Henderson Golf Course
314.26 Acres
1 Al Henderson Drive

1 inch = 800 feet

0 400 800 1,600 Feet





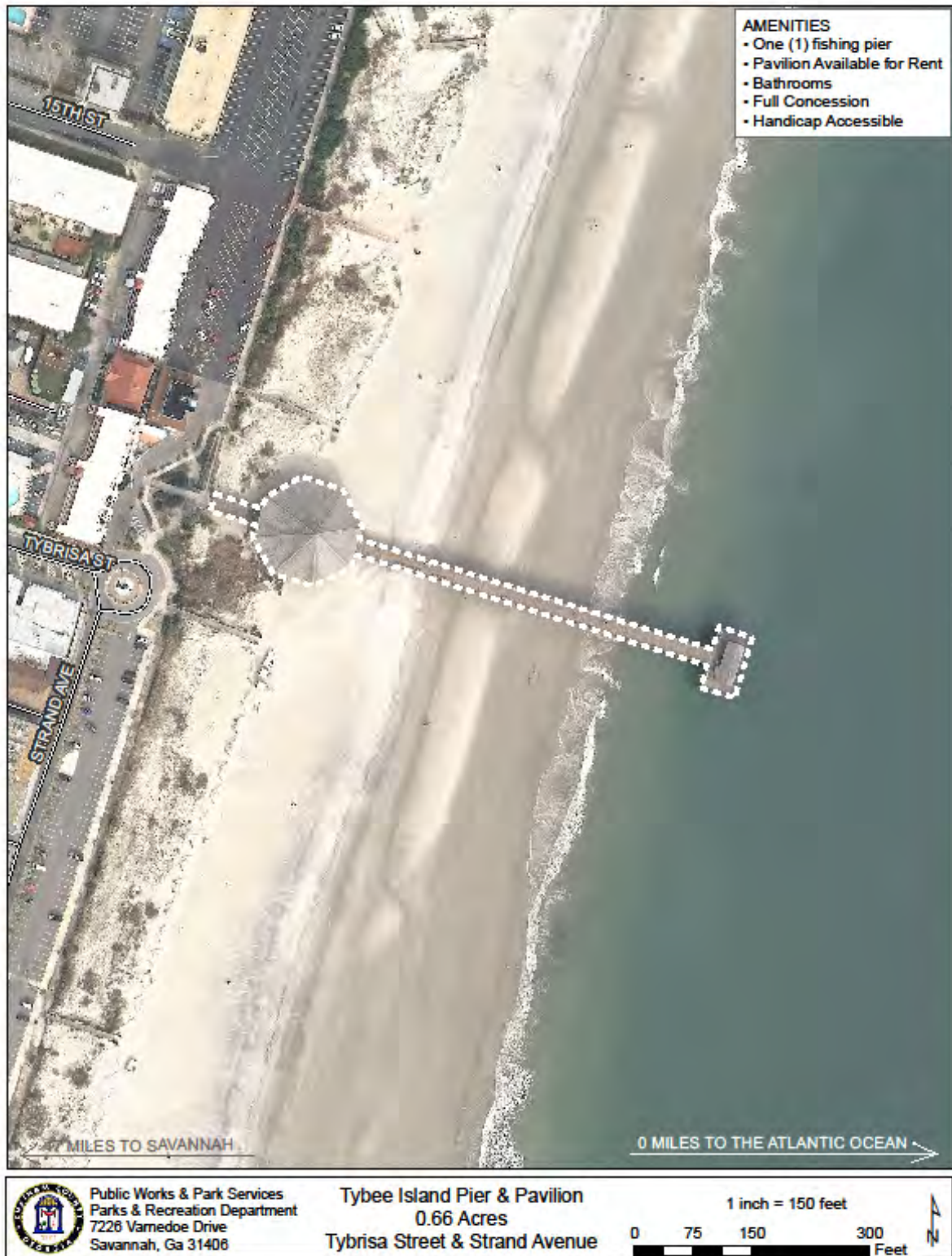
Public Works & Park Services
Parks & Recreation Department
7226 Varnedoe Drive
Savannah, Ga 31406

Anderson Cohen Weightlifting Center
~11,400 sq ft
7232 Varnedoe Drive

1 inch = 100 feet

0 50 100 200 Feet



























Public Works & Park Services
Parks & Recreation Department
7226 Varnedoe Drive
Savannah, Ga 31406

Tom Triplett Community Center
100 Tom Triplett Road
Pooler

1 inch = 100 feet
0 50 100 200 Feet



AMENITIES

- Conference Room Available for Rent
- Equipped with Kitchen
- Restrooms
- Paved Parking Lot
- Handicap Accessible

SERVICES

- Bingo • Movies • Covered Dish Luncheon
- Low Impact Exercise • Yoga • Aston Pilates
- Chair Aerobics • Stretch & Tone
- Stroller Fitness • Facial Fitness
- Art Class • Creative Writing
- Health, Nutrition, & Educational Seminars
- AARP Tax Aide Service (February - April)



Public Works & Park Services
Parks & Recreation Department
7226 Varnedoe Drive
Savannah, Ga 31406

Frank G. Murray Community Center
~4356 sq ft
160 Whitmarsh Road

1 inch = 150 feet

0 75 150 300 Feet





Public Works & Park Services
Parks & Recreation Department
7226 Varnedoe Drive
Savannah, Ga 31406

Lake Mayer Community Center
Park Area 98.45 Acres
1850 E. Montgomery Crossroad

1 inch = 150 feet

0 75 150 300 Feet





Public Works & Park Services
Parks & Recreation Department
7226 Varnedoe Drive
Savannah, Ga 31406

Tom Triplett Community Park
216 Acres
100 Tom Triplett Road

18 Hole
Disc Golf Course



Public Works & Park Services
Parks & Recreation Department
7226 Varnedoe Drive
Savannah, Ga 31406

L. Scott Stell Community Park
95.77 Acres
195 Scott Stell Road





Public Works & Park Services
Parks & Recreation Department
7226 Varnedoe Drive
Savannah, Ga 31406

Lake Mayer Community Park
98.45 Acres
1850 E. Montgomery Crossroad

1 inch = 350 feet

0 175 350 700 Feet







Public Works & Park Services
Parks & Recreation Department
7228 Varnedoe Drive
Savannah, Ga 31406

Tom Triplett Community Park
216 Acres
100 Tom Triplett Road

Off Road Bike Trails
25,886 linear feet
4.90 miles







Public Works & Park Services
Parks & Recreation Department
7226 Varnedoe Drive
Savannah, Ga 31406

Bungard Conservation Area
501.27 Acres
Basin Road & Ogeechee Road

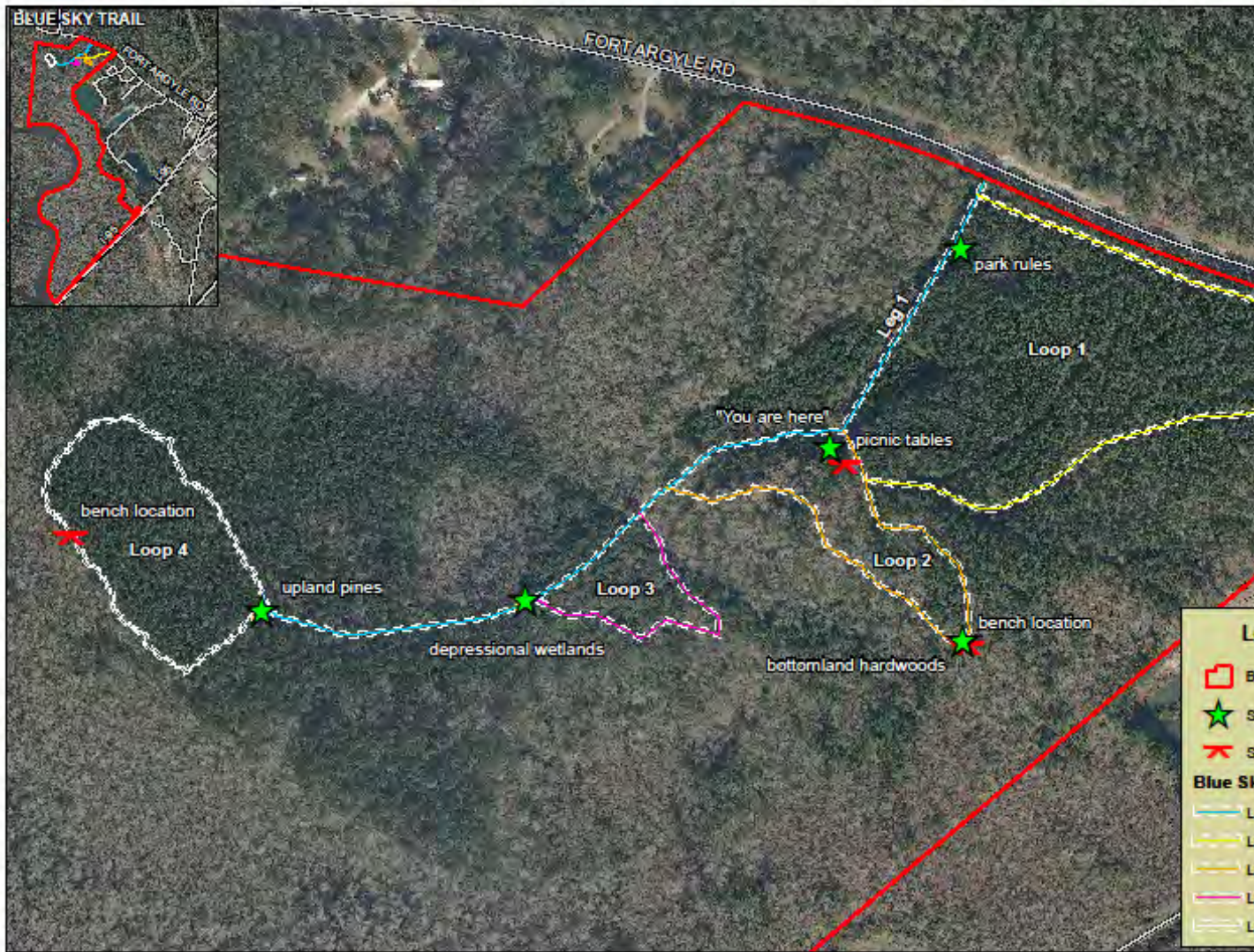
1 inch = 1,000 feet

0 500 1,000 2,000
Feet





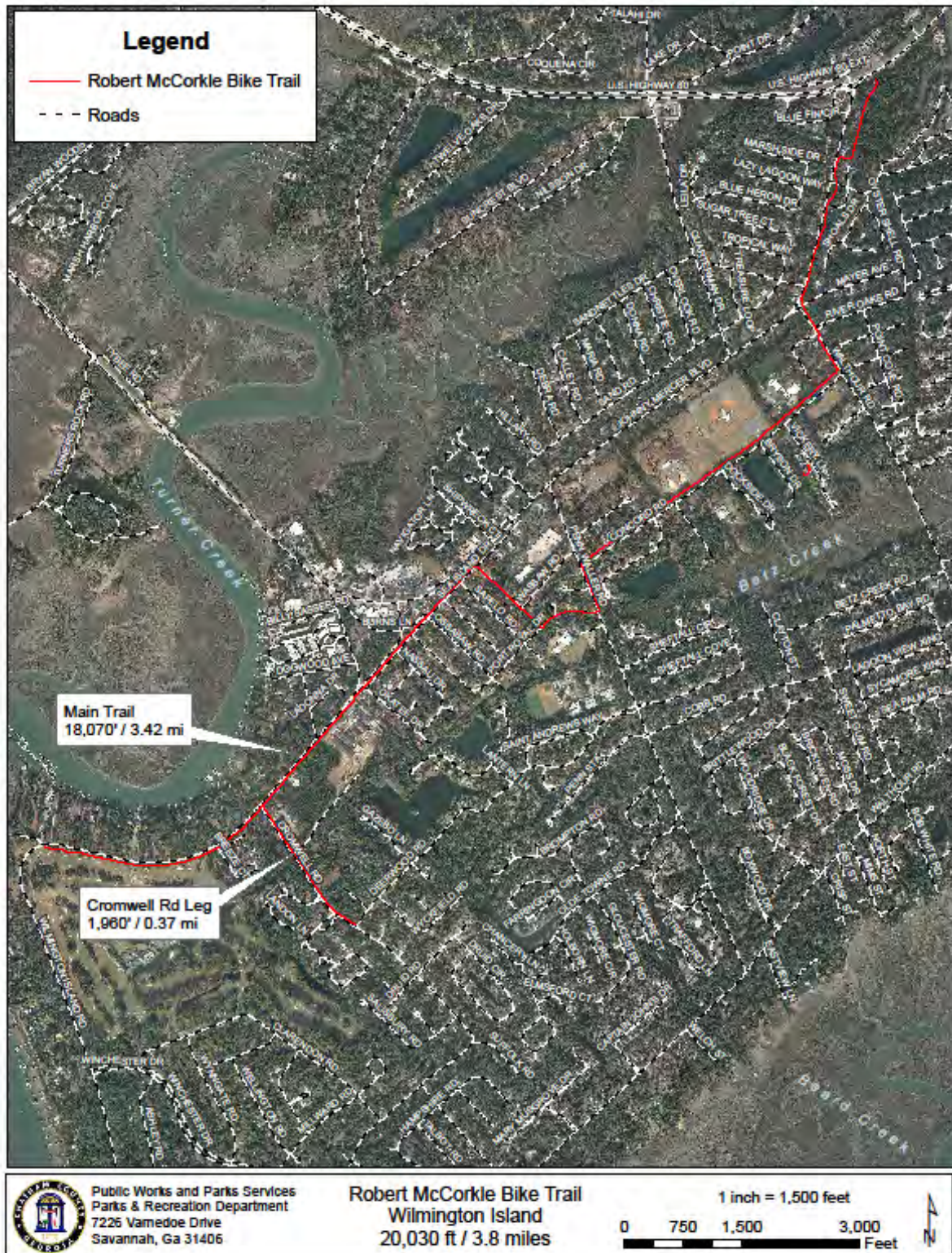




Public Works & Park Services
Parks & Recreation Department
7226 Varnedoe Drive
Savannah, Ga 31406

Blue Sky Trail
Trail: 1.6 Miles Park: 641.47 Acres
Fort Argyle Road

























AMENITIES

- Three (3) Pavilions Available for Rent
- Two (2) Baseball/Softball Fields
- Basketball Court
- Multi-Purpose paved Track
- Volleyball Court
- Bathroom/Concession Building
- Handicap Accessible



Public Works & Park Services
Parks & Recreation Department
7226 Vamedoe Drive
Savannah, Ga 31406

Runaway Point Neighborhood Park
13.63 Acres
240 Riverview Road

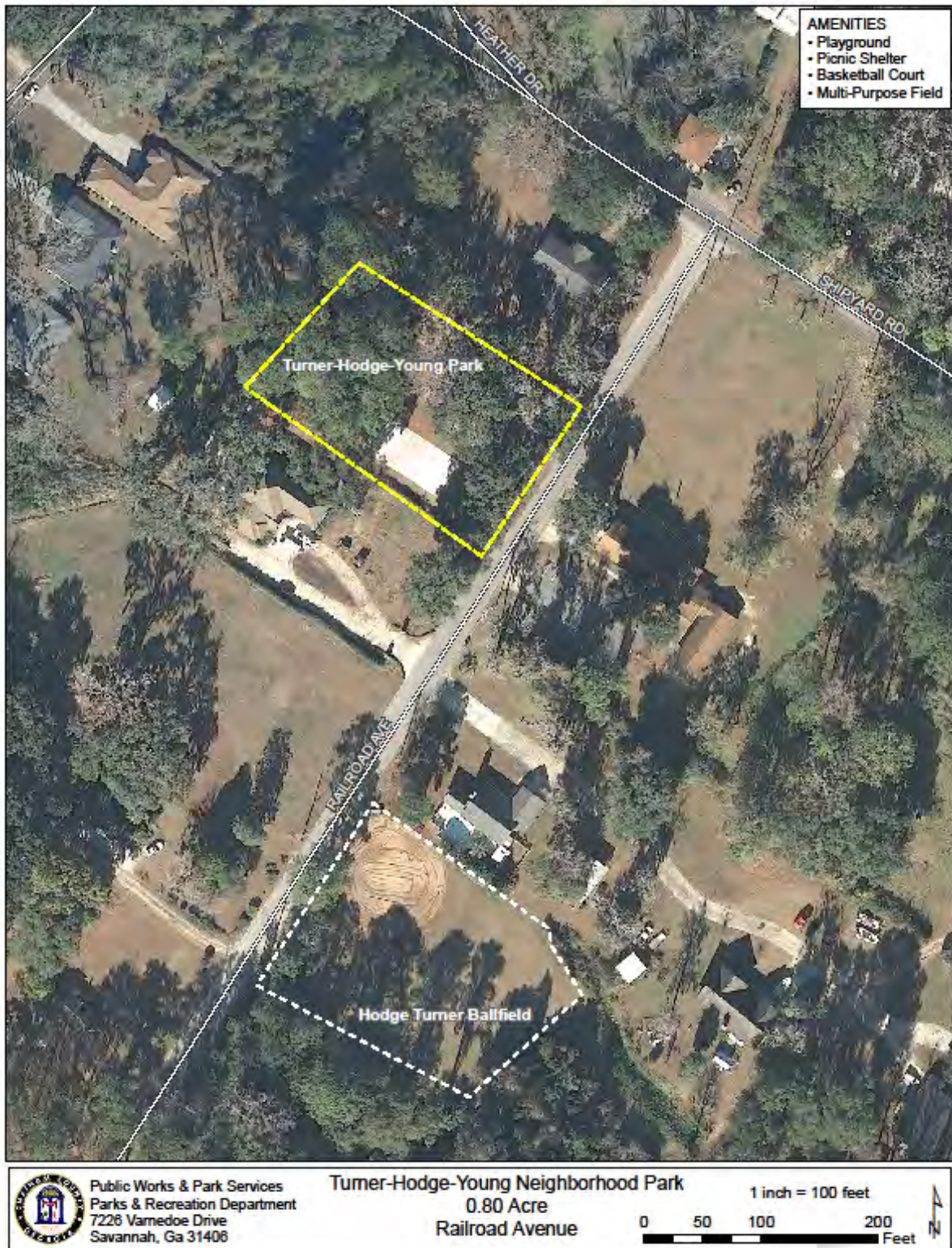
1 inch = 150 feet

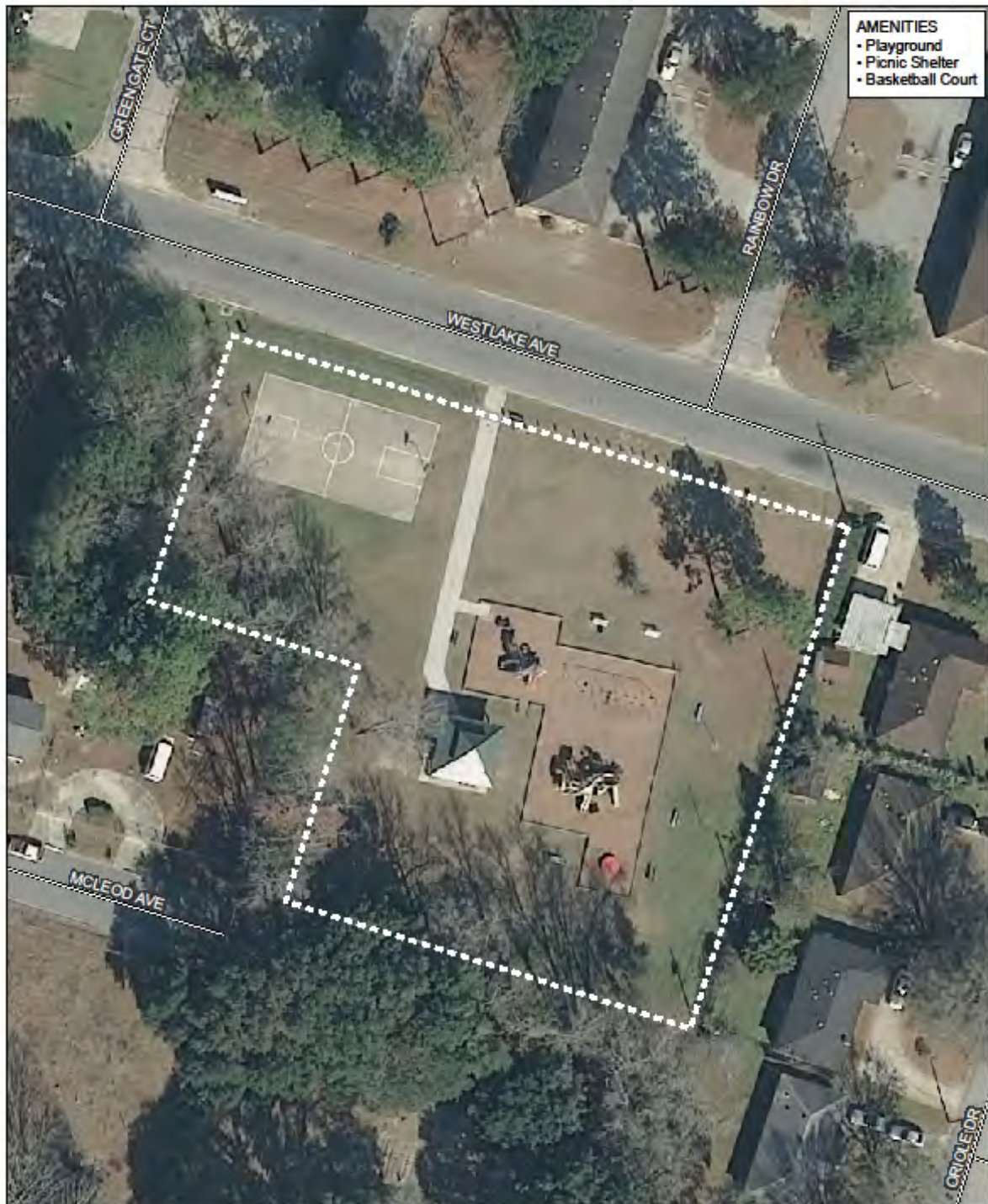
0 75 150 300 Feet











Public Works & Park Services
Parks & Recreation Department
7226 Varnedoe Drive
Savannah, Ga 31406

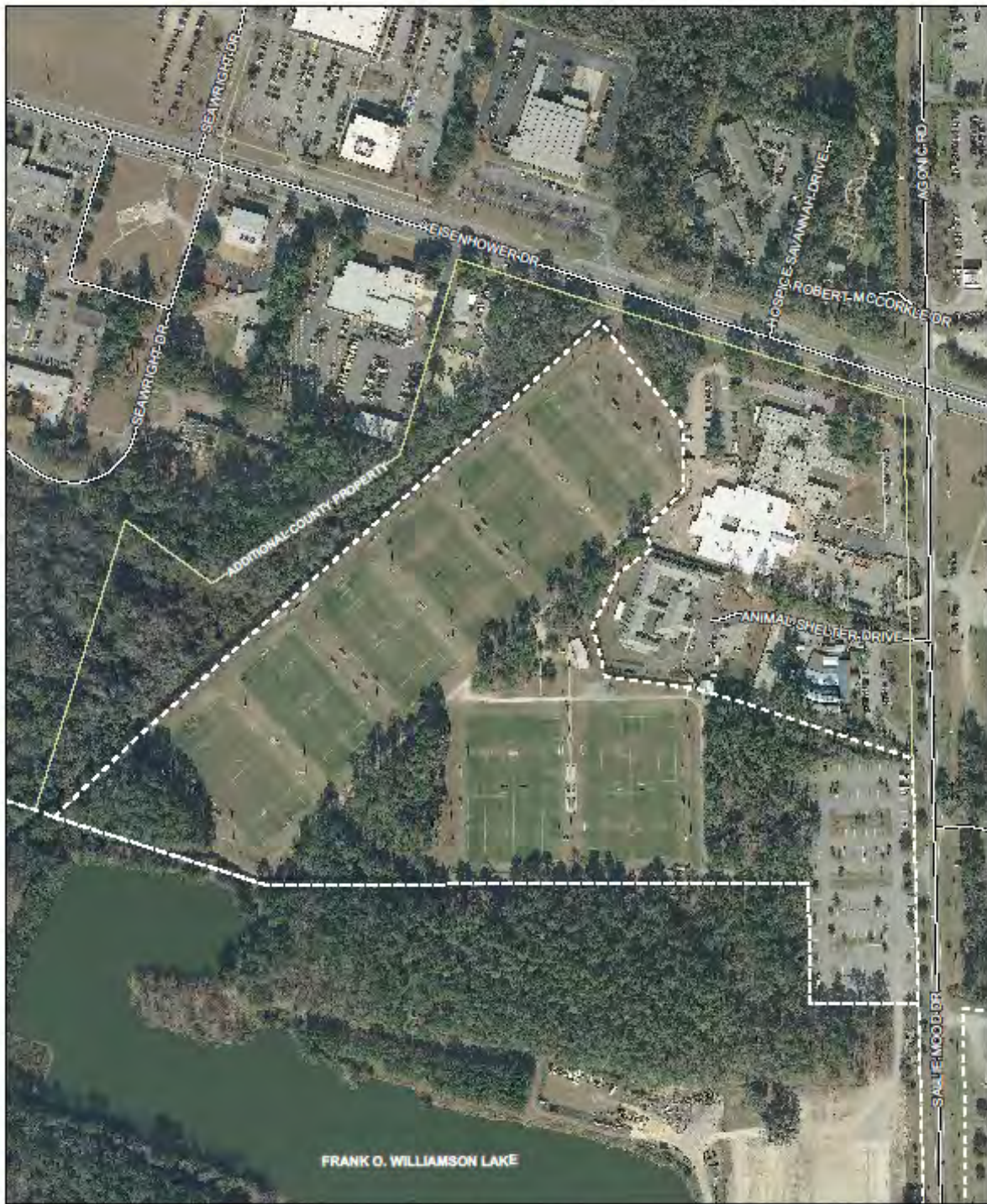
Westlake Neighborhood Park
1.10 Acres
Westlake Ave & Rainbow Dr

1 inch = 50 feet

0 25 50 100 Feet



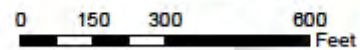




Public Works & Park Services
Parks & Recreation Department
7226 Varnedoe Drive
Savannah, Ga 31406

Jennifer Ross Soccer Complex
34.54 Acres
7221 Sallie Mood Drive

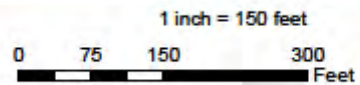
1 inch = 300 feet





Public Works & Park Services
Parks & Recreation Department
7226 Varnedoe Drive
Savannah, Ga 31406

Ambuc Park - 17.06 Acres
Sports Facility
7230 Sallie Mood Drive





Public Works & Park Services
Parks & Recreation Department
7226 Varnedoe Drive
Savannah, Ga 31406

Charlie C. Brooks Park - 18.12 Acres
Sports Facility
6900 Concord Road

1 inch = 200 feet

0 100 200 400 Feet





Public Works & Park Services
Parks & Recreation Department
7226 Varnedoe Drive
Savannah, Ga 31406

Hodge Turner Ballfield - 0.85 Acres
Sports Facility
Railroad Avenue

